

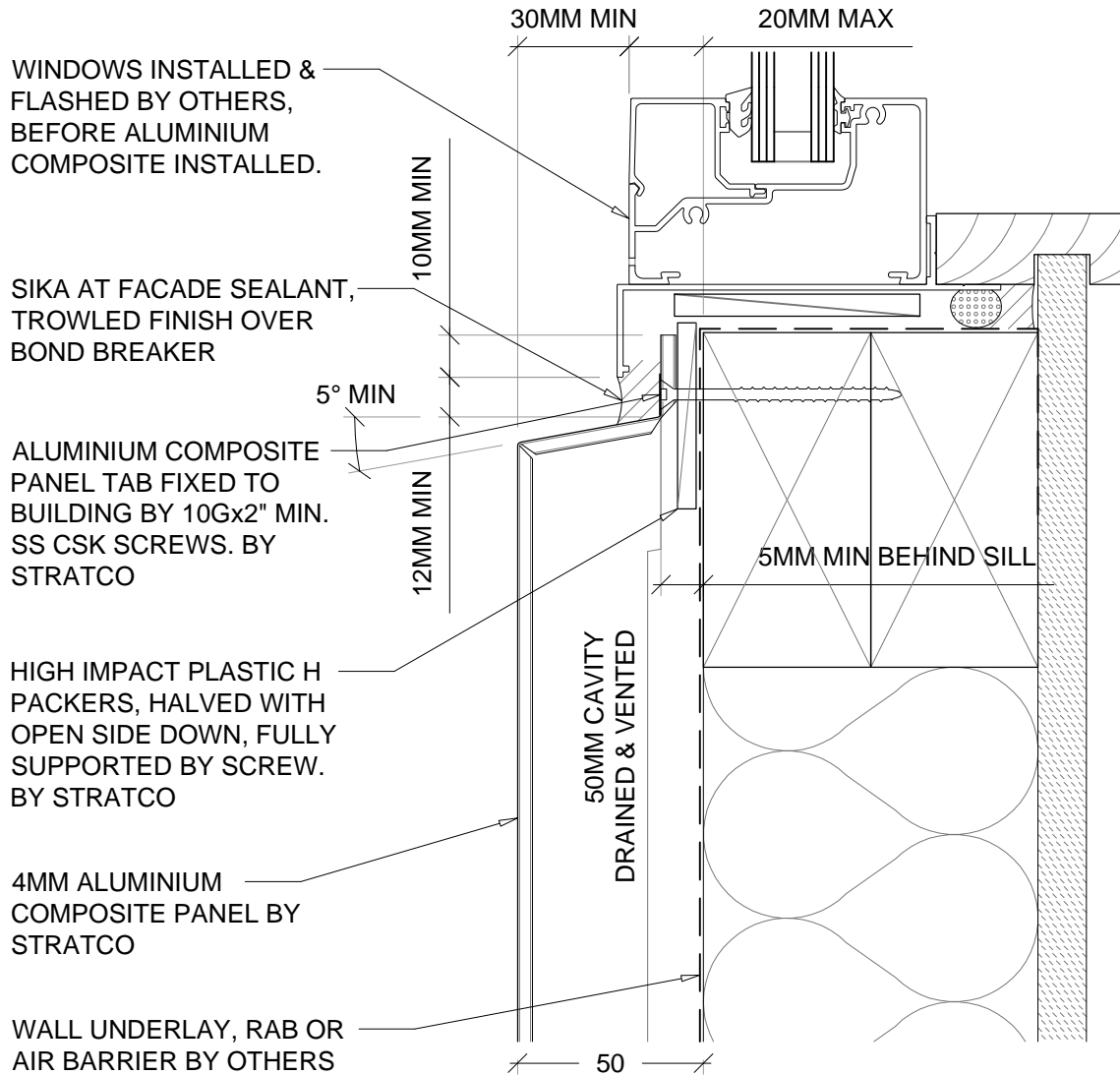
10G SCREWS @ MAX
600MM CTS, 8G
SCREWS @ MAX 400MM
CTS

IF TIMBER FRAMING IS
LESS THAN 30MM DEEP,
USE NYLON ANCHOR
TO FIX TO 30MM MIN
DEPTH INTO CONCRETE

TIMBER SHOWN IS
INDICATIVE ONLY. SEE
STRUCTURAL PLAN
FOR TIMBER LAYOUT

ALL SCREWS INTO
TIMBER ARE TO HAVE A
MINIMUM DISTANCE TO
EDGE OF TIMBER OF
15MM

PANELS BIGGER THAN
2.9 SQM REQUIRE
STRATCO ACP
STIFFENERS AT MAX
500 MM CTS



D2.13 COMMERCIAL WINDOW SILL

D2.13 COMMERCIAL WINDOW SILL

SCALE: 1:2 @A4



JOB NAME: TBA
CONTRACTOR: TBA
JOB# NA QUOTE# NA

FILE: SEALED JOINT SYSTEM DETAILS 2017
DATE: 2017-08-07
DRAWN: AR